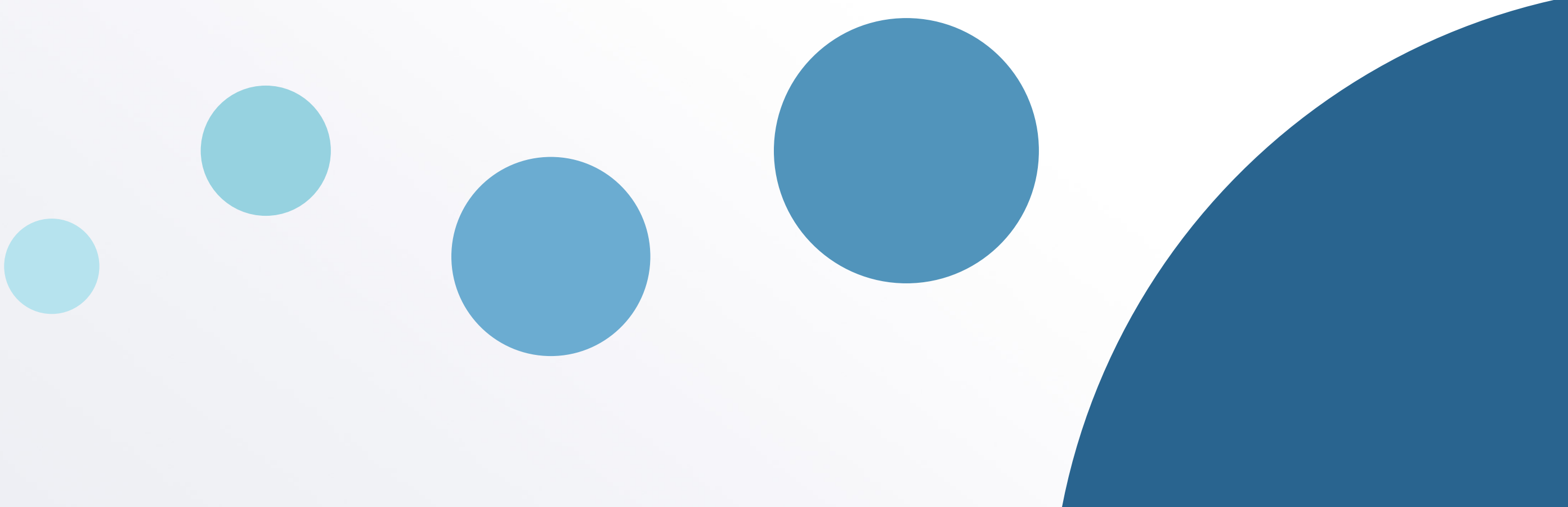


# Guide on **SDS & CLP** labelling for producers of **fragranced** **consumer** **products**



# What is **SDS**?

A **Safety Data Sheet** (**MSDS** or **SDS** for short) is essentially a **safety document** that **determines ingredients** in a particular mixture. It contains contact details of your supplier and other important safety information including potential hazards, information on handling and storage as well as emergency measures in the case of an accident.



Using an SDS, you can create **CLP compliant labels** for your products which will have the **following information**:

- Product Identifiers
- Signal Words
- Nominal Quantity
- Hazard Statements
- Precautionary Statements
- Allergen Information
- Hazard Pictograms
- Supplier Details

**Find out more** .....▶



**Product Identifiers** – As a general rule, the term used for identification of the substance or mixture should be the same as that used in the safety data sheet.

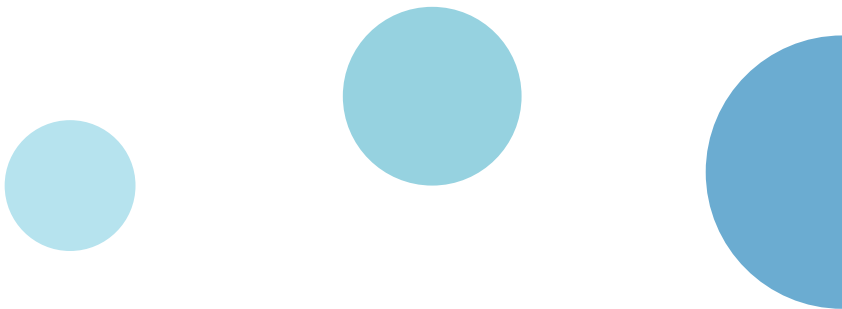
**Signal Words** – A signal word indicates the relative level of severity of a particular hazard.

**Nominal Quantity** – Unless the quantity is specified elsewhere on the package, it should be part of the label (i.e. the weight).

**Hazard Statements**, the appropriate **Precautionary Statements**, and a section for **Supplemental Information** will be used where applicable.


**Hazard Statements** – The Hazard Statements are those that provide the consumer with a direct warning as to what the mixture may do – the nature of the hazard.

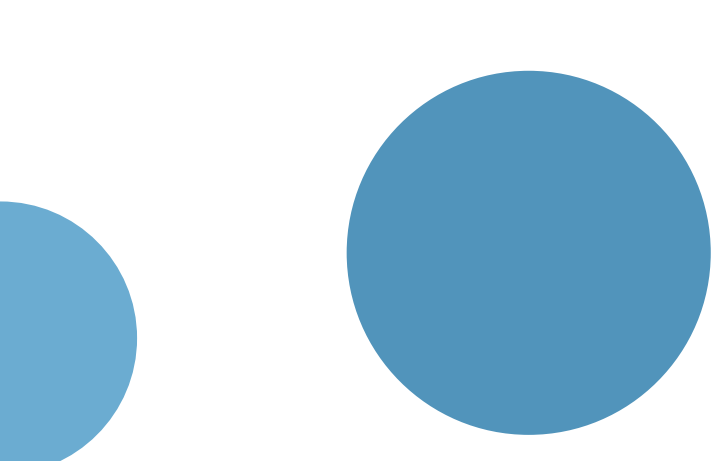




**Precautionary Statements** – These are a set of instructions that advise the customer how to avoid or minimise the hazards that may be caused by the hazardous mixture.

**Statements** – The regulations state that ‘relevant’ precautionary statements should be included, with some being **mandatory**, others **recommended**, and others **advised**. For example, **Allergen Information** should also be included on the label if applicable.

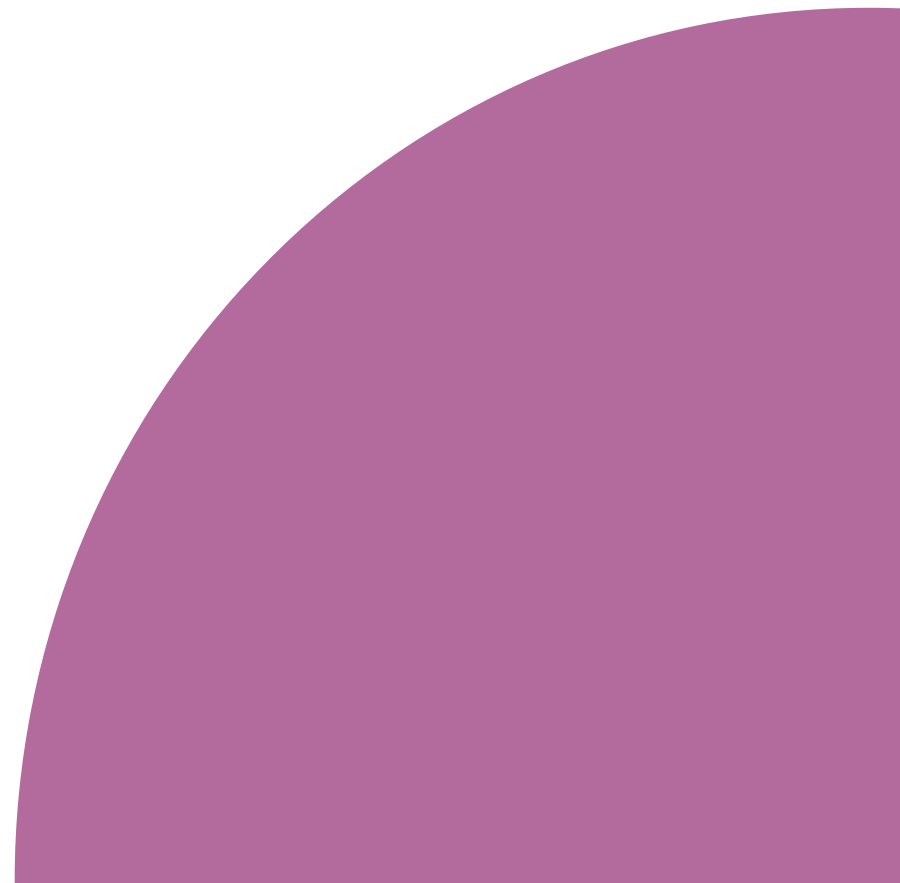




**Hazard Pictograms** – A hazard pictogram is a pictorial presentation to communicate information on the hazard concerned.

**Supplier Details** – The name, address, and telephone number of the supplier.

**Check out an example of a CLP label**



**PRODUCT IDENTIFIER**

**GUMMIE BEAR SLUSHIE**

**SIGNAL WORD**

**Warning**

Code Number DEV-50051

**NOMINAL QUANTITY**

Weight 120ml

**HAZARD & PRECAUTIONARY STATEMENTS**

May cause an allergic skin reaction.

Toxic to aquatic life with long lasting effects. Avoid breathing fumes. Wash hands thoroughly after handling. Wear protective gloves and eye protection.

If on skin: Wash with plenty of water.

If skin irritation or rash occurs: Get medical advice.

If eye irritation persists: Get medical attention.

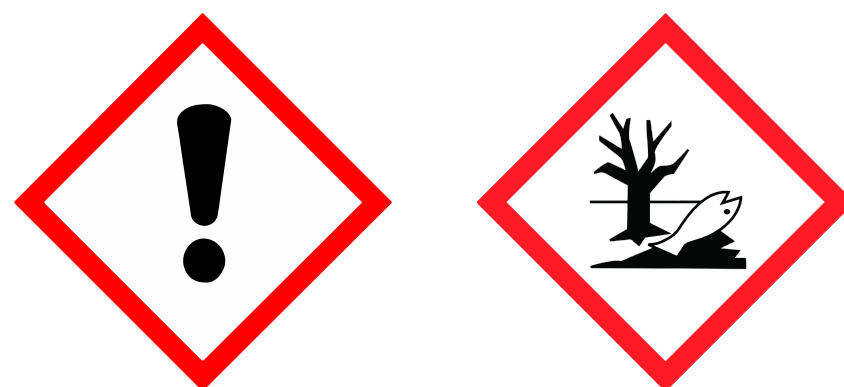
Dispose of contents and container in accordance with local regulation.

**ALLERGEN INFORMATION**

Contains Eugenol, Cinnamic aldehyde, Linalool, alpha-Hexyl cinnamic aldehyde (HCA) (2-Hexyl-phenyl-2-propenal), Ethyl methyl phenyl glycidate (Aldehyde C16) (Fraise), Geranyl acetate, 2,4-Dimethyltetrahydro benzaldehyde, 3,7-Dimethyl-2,6,octadienal (Citral) (Lemarome) and delta-Demascone (1-(2,6,6-Trimethyl-3-cyclohexen-1-yl)-2-buten-1-one). May produce an allergic reaction.

UN 3082, ENVIRONMENTALLY HAZARDOUS SUBSTANCE, LIQUID, N.O.S., 9, III, (E)

**HAZARD PICTOGRAMS**



**SUPPLIER DETAILS**

DEMO dataEssence Software, 20-22 Wenlock Road, London N1 7GU, UK, +44 303 040 1345



# Want to know more?

If you would like to find out more about how we can provide software for creating SDS & CLP labels for your product range please do **get in touch for a demonstration**. We'll be more than happy to help!

## We'd love to hear from you!

 [info@dataessence.com](mailto:info@dataessence.com)

 +44 303 040 1345

 [dataessence.com](http://dataessence.com)

Follow us!

